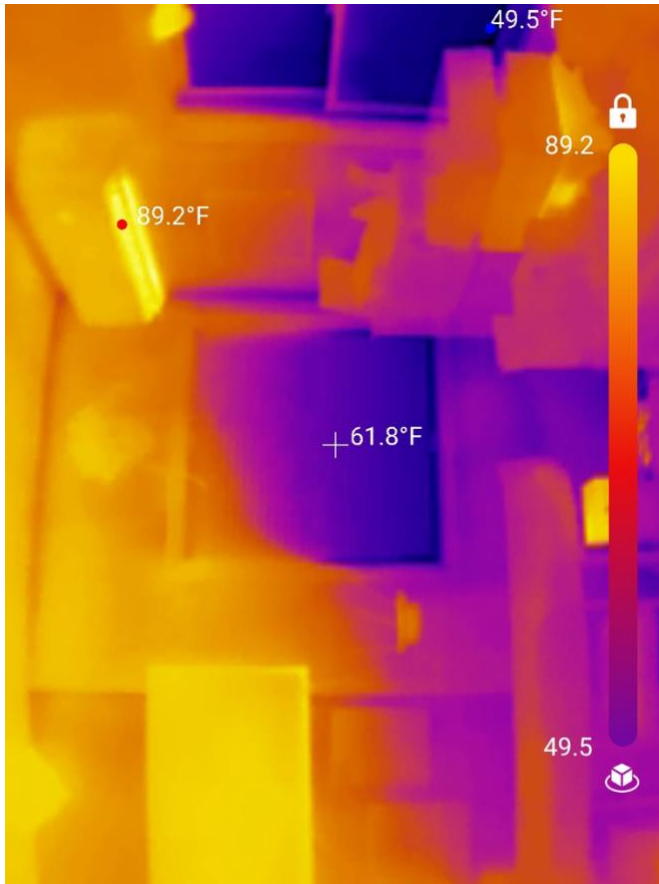


GREEN DALTON COMMITTEE THERMAL CAMERA OVERVIEW

The basic idea behind these thermal cameras is to capture the differences in temperature in any environment – like the inside of your home – in a photograph. The picture below illustrates how such information is captured using the TOPDON thermal camera. As you can see in this picture, which was taken during the wintertime inside of a house, the “cooler” colors represent cooler temperatures, where there may be significant heat loss in your home.



PLEASE NOTE: This thermal camera requires either an **iPhone** or **Android** a smart phone to work – plus software you will need to download (for free) on your phone. The TOPDON thermal camera then simply plugs into the USB-C port on the bottom of your phone. Once begin taking thermal photos you can save and share them. Just like any photos you take with your phone camera, you can send those photos to yourself via email, or copy them from your phone directly to your computer.

For an overview of how to unpack and setup your TOPDON camera, there are instructions on the following pages for both iPhone and Android. **One thing you may need to do is remove your phone case so that the camera inserts fully into your phone’s USB-C or Lightning port.**

You might also enjoy watching this helpful YouTube video: https://youtu.be/j_h9wdZsvk0

In the summertime, the temperature differences might be reversed – with “warmer” colors representing hot air from outside finding its way inside. Please note that you could also take pictures *outside* your home to see where there may be air leaks.

ONE FINAL NOTE: Please confirm that your phone's operating system and hardware is new enough to support the TOPDON software. For the iPhone, you will need **iOS 11 or newer** (and be using an iPhone 7 or newer). For Android, you will need to be running **Android 6.0 or newer**.

A special thank you to our Dalton Librarian, Janet Forest, for facilitating the checkout of these cameras to our community! **Please contact the library in advance** to see if the thermal camera you need is available for checkout at any given time at dalton@cwmar.org or **413-684-6112**. Please note regarding camera checkout:

1. Cameras are only available to **Dalton residents** with a library membership (which is free).
2. Subject to a **one-week lending period**, with no renewals, and cameras can't be placed on hold.
3. Borrowers will be responsible for **replacement cost** (\$300) if camera is lost or damaged.

TOPDON

TC001

Quick User Guide



Multilingual User Manual

Thanks for purchasing the TOPDON TC001. This quick user guide will walk you through the basic setup and operation of the TC001-thermal imaging camera, so please carefully read and follow all the instructions and warnings.

For further information, please go to www.topdon.com/products/tc001 to download the detailed user manual. Alternatively, you can scan the QR code below.



- For a detailed user manual, please scan the QR code.
- 詳細な説明書については、QRコードをスキャンしてください。
- Für ein ausführliches Handbuch scannen Sie bitte den QR-Code.
- Pour obtenir un manuel d'utilisation détaillé, veuillez scanner le code QR.
- Per un manuale utente dettagliato, si prega di scansionare il codice QR.
- 詳細な説明書については、QRコードをスキャンしてください。
- Para obtener un manual de usuario detallado, escanee el código QR.
- Para um manual detalhado do utilizador, por favor, digitalize o código QR.
- Чтобы получить подробное руководство пользователя, отсканируйте QR-код.

TEL	86-755-21612590 1-833-629-4832 (North America)
EMAIL	SUPPORT@TOPDON.COM
WEBSITE	WWW.TOPDON.COM
FACEBOOK	@TOPDONOFFICIAL
TWITTER	@TOPDONOFFICIAL

*This device complies with Part 15 of the FCC Rules. Operation is subject to the following two conditions: (1) this device may not cause harmful interference, and (2) this device must accept any interference received, including interference that may cause undesired operation.

*Any changes or modifications not expressly approved by the party responsible for compliance could void the user's authority to operate the equipment.

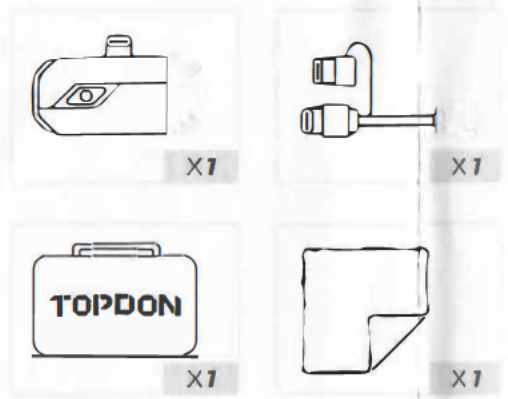


1

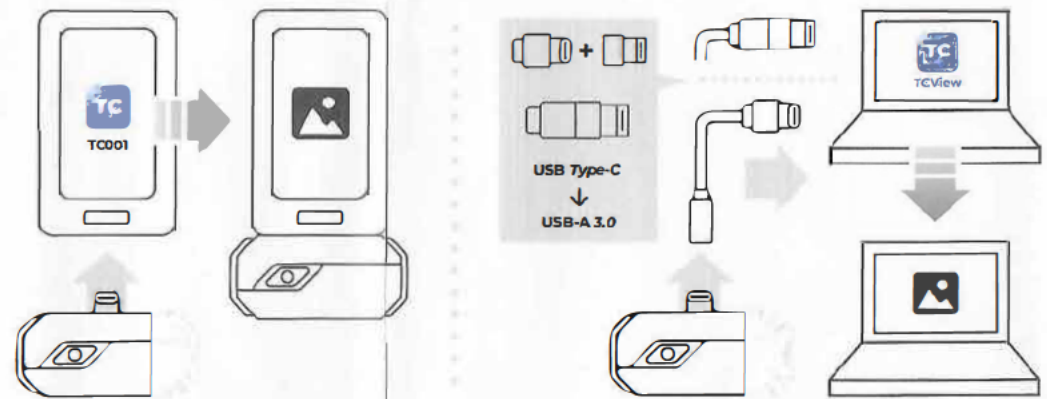
APP



2



2



TOPDON TC002

Quick User Guide



Download on the
App Store

Multilingual User Manual

Thanks for purchasing the TOPDON TC002. This quick user guide will walk you through the basic setup and operation of the TC002-thermal imaging camera, so please carefully read and follow all the instructions and warnings.

For further information, please go to www.topdon.com/products/tc002 to download the detailed user manual. Alternatively, you can scan the QR code below.



- For a detailed user manual, please scan the QR code.
- 詳細な説明書については、QRコードをスキャンしてください。
- Für ein ausführliches Handbuch scannen Sie bitte den QR Code.
- Pour obtenir un manuel d'utilisation détaillé, veuillez scanner le code QR.
- Per un manuale utente dettagliato, si prega di scansionare il codice QR.
- 詳細な説明書については、QRコードをスキャンしてください。
- Para obtener un manual de usuario detallado, escanee el código QR.
- Para um manual detalhado do utilizador, por favor, digitalize o código QR.
- Чтобы получить подробное руководство пользователя, отсканируйте QR-код.

TEL	86-755-21612590 1-833-629-4832 (North America)
EMAIL	SUPPORT@TOPDON.COM
WEBSITE	WWW.TOPDON.COM
FACEBOOK	@TOPDONOFFICIAL
TWITTER	@TOPDONOFFICIAL

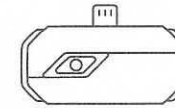
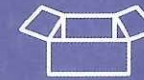
*This device complies with Part 15 of the FCC Rules. Operation is subject to the following two conditions: (1) this device may not cause harmful interference, and (2) this device must accept any interference received, including interference that may cause undesired operation.

*Any changes or modifications not expressly approved by the party responsible for compliance could void the user's authority to operate the equipment.



1

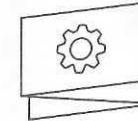
APP
↓



X1



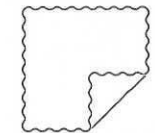
X1



X1



X1



X1

2

